

Martu Country, Australia's Western Desert a fire dependent culture

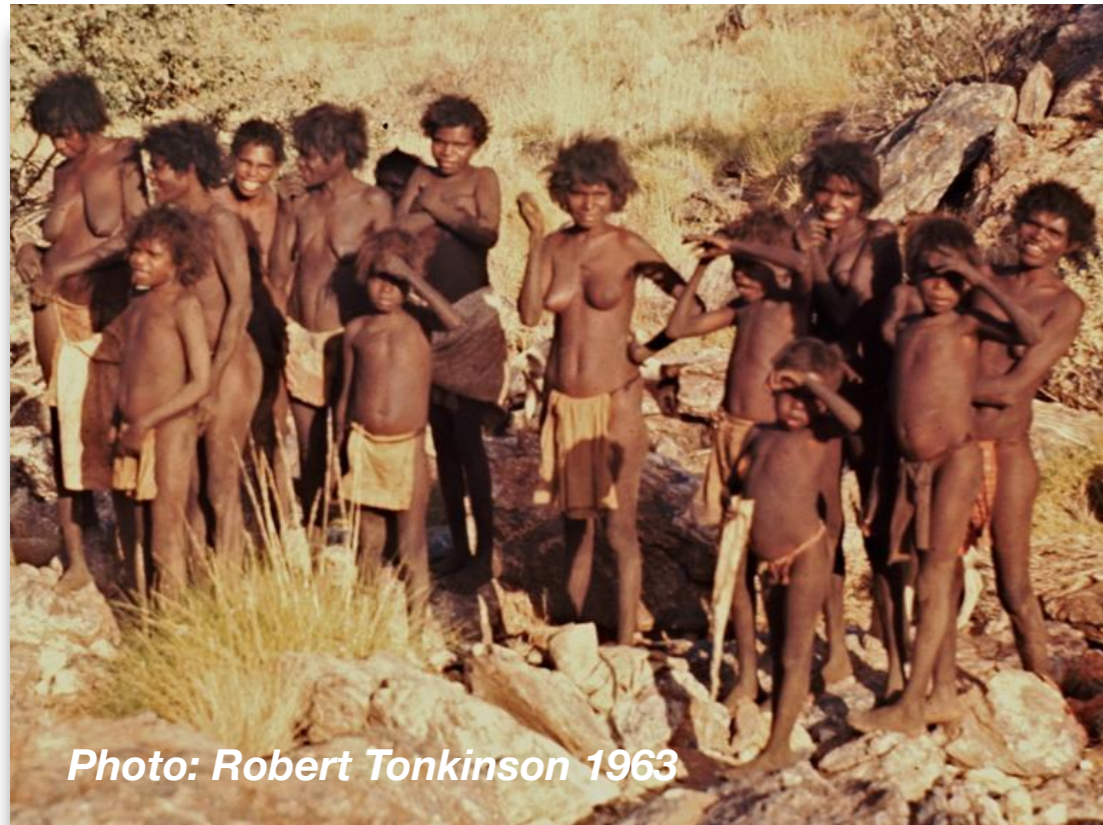
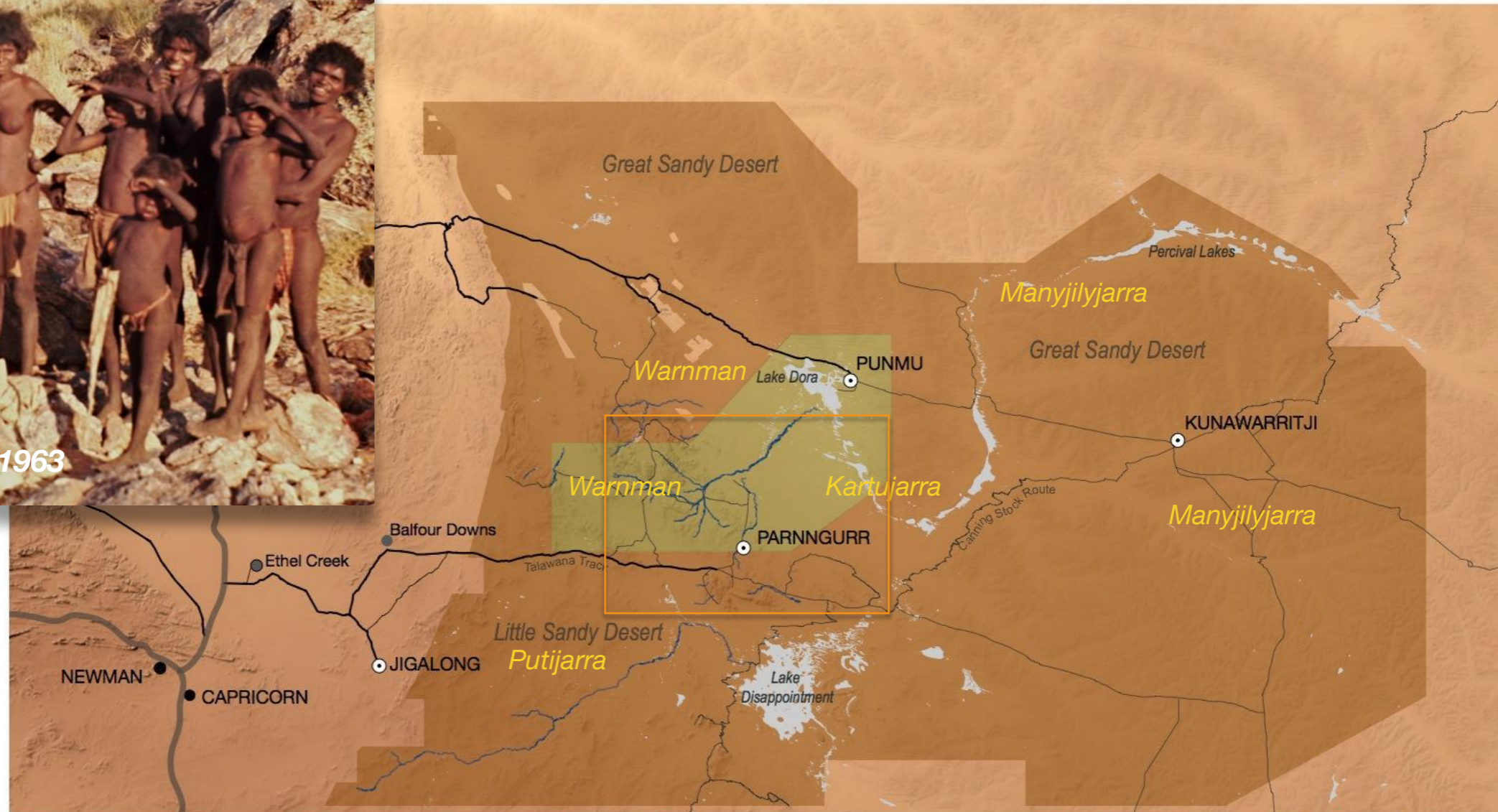


Photo: Robert Tonkinson 1963



- ⊙ MARTU COMMUNITY
- OTHER COMMUNITY
- Station

- Primary road
- Maintained track
- Unmaintained track

- Martu Native Title Lands
- Karlamily National Park
- Salt playa
- ~ Desert watercourse

Dialect-named sets of estate groups

0 50 100 150 200 km

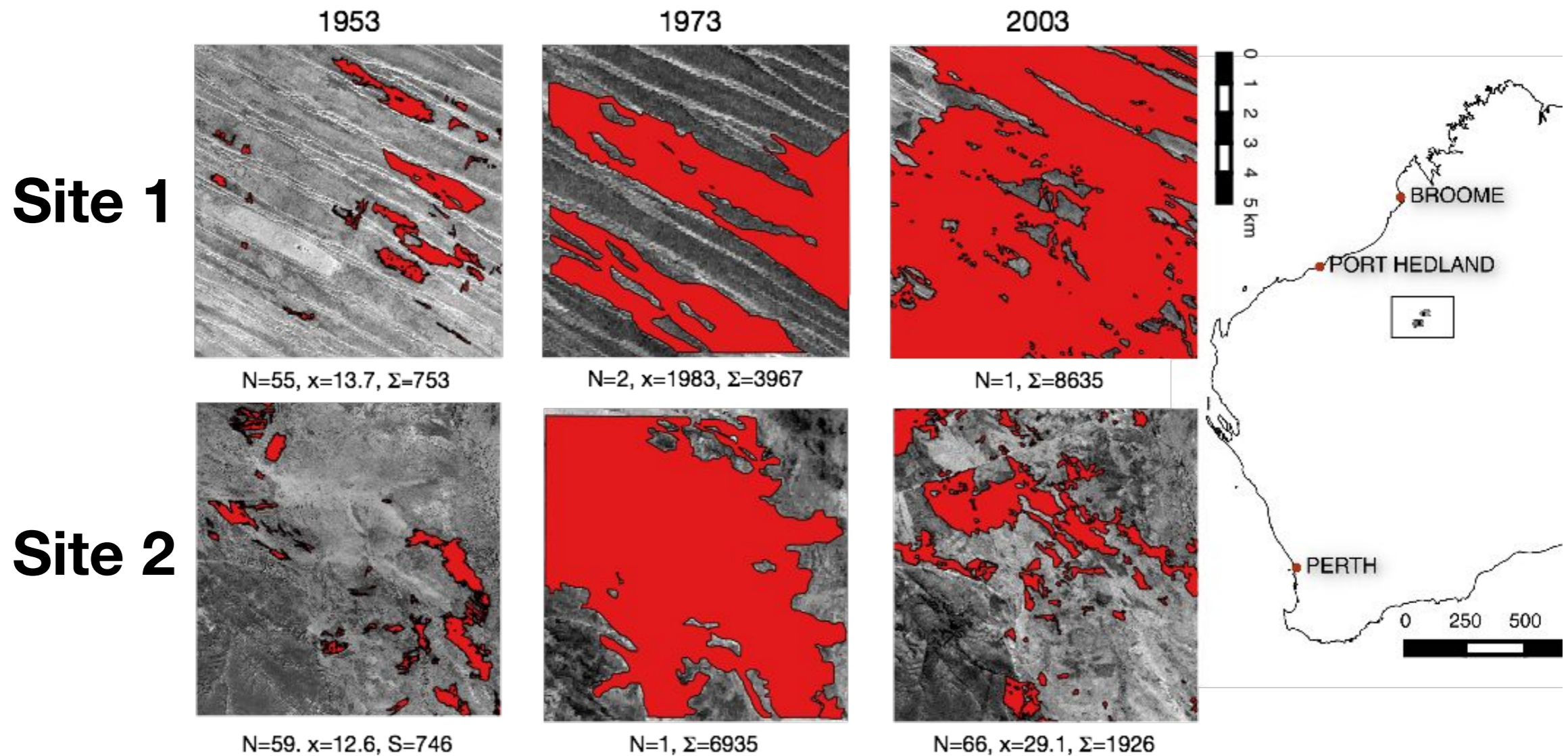


□ Study Area

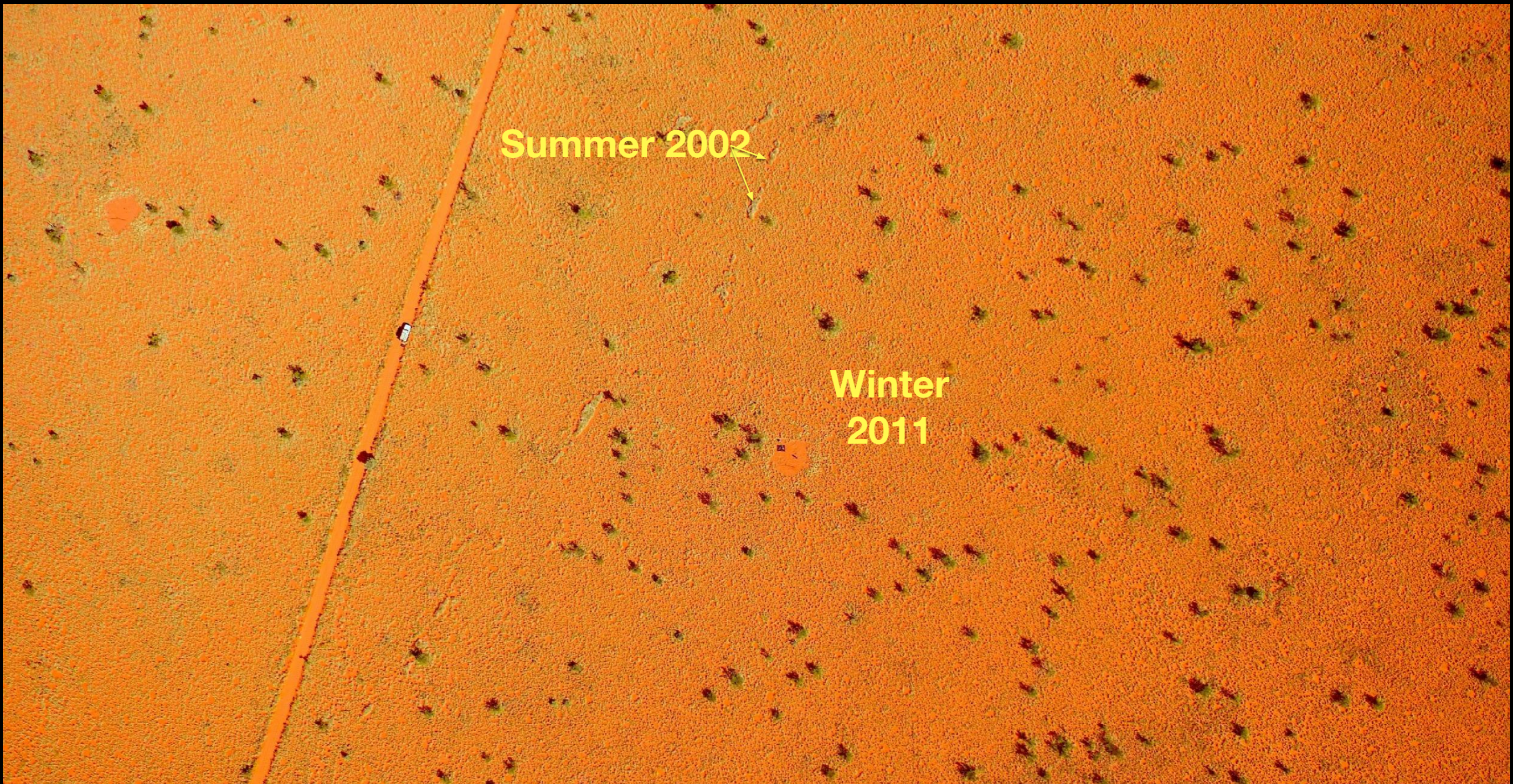




Fire regime shifts: before, during, and after Martu hiatus from their homelands.



Without cultural burning

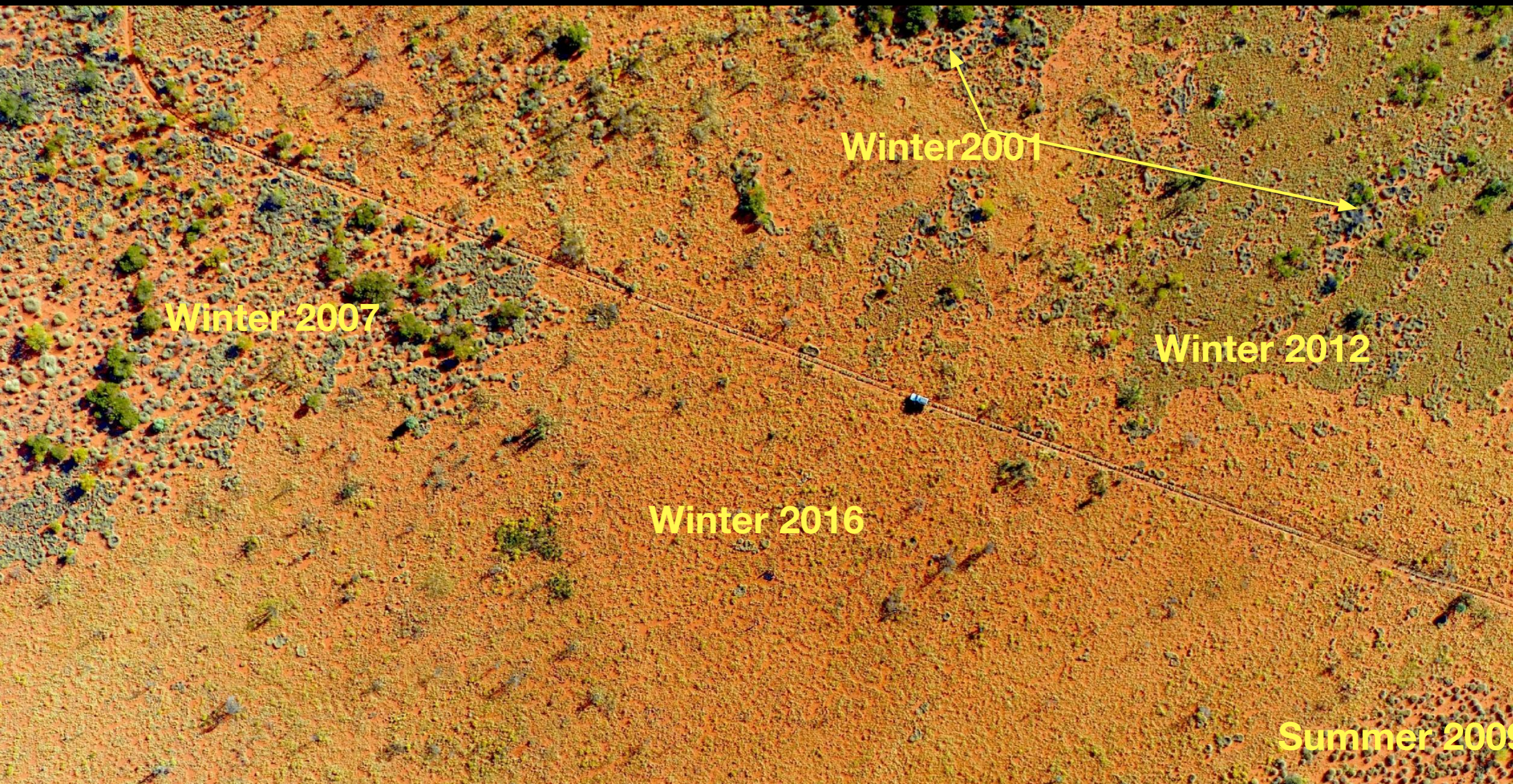


Winter 2017

0 25 50 100 m

9 ha

With cultural burning

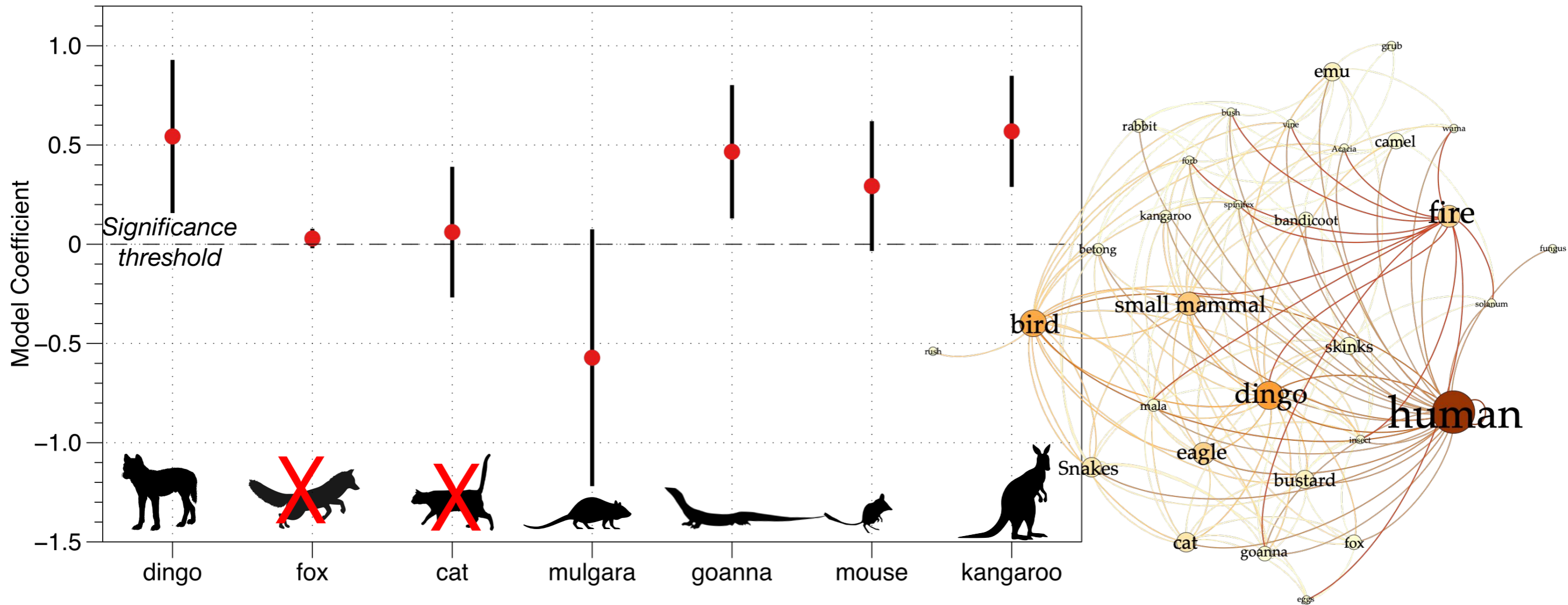


0 25 50 100 m

Winter 2017

9 ha

Many native species favored by cultural burning



Bliege Bird, R., Bird, D.W., Fernandez, L.E., Taylor, N., Taylor, W., Nimmo, D., 2018. Aboriginal burning promotes fine-scale pyrodiversity and native predators in Australia's Western Desert. *Biological Conservation* 219, 110–118.

Loss of cultural burning in Australia precipitated the spread of invasive species and the highest rate of mammal extinction in the world

30 native mammals have become extinct since European settlement, with the loss of over 1/2 of all native mammals species in the Western Desert



FEATURE ARTICLE

SEE COMMENTARY

Ongoing unraveling of a continental fauna: Decline and extinction of Australian mammals since European settlement

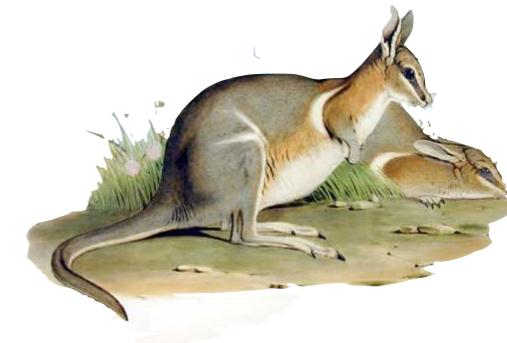
John C. Z. Woinarski^{a,b,1}, Andrew A. Burbidge^c, and Peter L. Harrison^d

^aNorthern Australian Hub of National Environmental Research Program and ^bThreatened Species Recovery Hub of National Environmental Science Program, Charles Darwin University, Darwin, NT 0909, Australia; ^cResearch Fellow, Department of Parks and Wildlife, Wanneroo, WA 6069, Australia; and ^dMarine Ecology Research Centre, School of Environment, Science and Engineering, Southern Cross University, Lismore, NSW 2480, Australia

This Feature Article is part of a series identified by the Editorial Board as reporting findings of exceptional significance.

Edited by William J. Bond, University of Cape Town, Cape Town, South Africa, and approved January 13, 2015 (received for review September 10, 2014)

The highly distinctive and mostly endemic Australian land mammal fauna has suffered an extraordinary rate of extinction (>10% than previously recognized and that many surviving Australian native mammal species are in rapid decline, notwithstanding the



Indigenous ecosystems, justice, and autonomy in remote communities

