

**KS WILD**  
KLAMATH-SISKIYOU  
WILDLANDS CENTER

**BOARD OF DIRECTORS**

**Susan Jane Brown**  
Portland, Oregon

**Chuck Burr**  
Ashland, Oregon

**Shannon Clery**  
Ashland, Oregon

**Liz Crosson**  
Los Angeles, California

**Shelley Elkovich, President**  
Ashland, Oregon

**Joseph Flaherty**  
O'Brien, Oregon

**Tracy Harding**  
Ashland, Oregon

**Grey Hecht**  
Talent, Oregon

**Stuart O'Neill**  
Jacksonville, Oregon

**Gene Rhough**  
Brooklyn, New York

**STAFF**

**Lesley Adams**  
Rogue Riverkeeper

**Forrest English**  
Water Quality Coordinator

**Dave Levine**  
Administrative Director

**Gary Powell**  
Canvass Director

**George Sexton**  
Conservation Director

**Laurel Sutherlin**  
Grassroots Organizer

**Stephanie Tidwell**  
Executive Director

**Joseph Vaile**  
Campaign Director

November 15, 2010

Dear supporter,

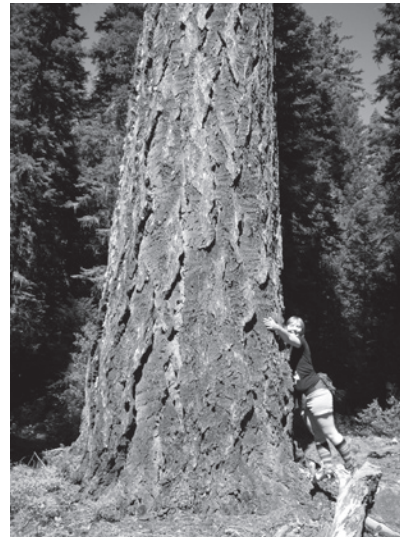
Imagine yourself at the mouth of the Rogue River near Gold Beach, Oregon. You bend down and dip a cup in the river to take a look at the water. Don't drink it! All the management decisions and activities throughout the 3.3 million acre Rogue Basin are reflected in that single cup of water. From logging to mining to industrial pollution, KS Wild is working to protect and restore our precious watersheds with the goal of fulfilling the promise of the Clean Water Act to make our waters fishable, swimmable, and yes, drinkable.

Now, imagine yourself on the rugged northern California Coast watching Chinook salmon as they head up the Klamath River from the Pacific Ocean. Many of those fish need to travel far, sometimes hundreds of miles, to spawn in their natal streams. KS Wild is making it a little bit easier for these Pacific Coast icons. In the past year, our advocacy has helped remove old, crumbling logging roads and stop harmful post-fire logging that bleed sediment into streams on the Klamath, Shasta-Trinity and Six Rivers National Forests.

Your support of KS Wild demonstrates that you know that we all live downstream and that the Klamath-Siskiyou region is a very special place warranting our most steadfast advocacy. Your support also shows that you care deeply enough to do something about it.


**We're honored that you stand with KS Wild, and we ask you to continue to support our work by giving as generously as possible today.**


Since 1997, KS Wild has been leading the charge to protect and restore southwest Oregon and northwest California's forests, wildlands, wildlife and waters. We got our start challenging old-growth logging, road building and livestock grazing on the region's public lands and have since expanded our horizons to include forest restoration, travel planning, mining watch and legislation of permanent protections for the region's ecological gems. Through our Rogue Riverkeeper program, we are also protecting the public trust waters of the Rogue River basin. Our family has grown too, and you are now one of KS Wild's 4,000+ members and supporters.





## WATER IS THE STUFF OF LIFE


The Klamath-Siskiyou is blessed with an abundance of natural resources and beauty. What ties all of these mountains, meadows, and valleys together is water. The region is host to more than a dozen rivers – including the Rogue, Klamath, Shasta, Scott, Trinity, Salmon, Applegate, Illinois, Chetco, Winchuck, Pistol, and Smith Rivers – and has the most concentrated number of Wild and Scenic River stretches in the country. **Nearly all of KS Wild and Rogue Riverkeeper's work can be viewed through the lens of water. Major threats to water quality include:**


 **Poor logging practices and associated roads** cause erosion, silting up streams and damaging salmon habitat.


 **Unchecked off-road motorized recreation** causes more of the same, and spreads dangerous pathogens like *P. lateralis*, the root rot disease that is killing the region's beautiful and rare Port Orford cedars.

 The resurgent **mining boom** not only causes similar erosion; placer mining also strips riparian forests bare, diverts streams and introduces pollutants into our water. Suction dredge mining alters river and stream bottoms, destroying salmon spawning habitat.

 **Inappropriate livestock grazing** in our public forests introduces *E. coli* and other bacteria into headwaters streams, degrading public water resources that primarily flow from the public forests to communities downstream.

 **Past intensive logging has also been coupled with fire suppression**, creating dense young forests that may be more susceptible to stand-replacing fire. As the most active fire suppression of the past century has occurred in the wildland-urban interface, where most of the Klamath-Siskiyou's residents live, this has the potential to adversely impact our drinking water. Misguided wildfire 'burnout' policies have also trashed streams and bulldozed roads when natural fire regimes would have been less intense.

 Our work to **mitigate climate change** through old-growth forest protection also has a strong aquatic component, as these forests not only sequester more carbon than tree farms but also shield our headwater streams from increased solar radiation, thus keeping waters cool enough for temperature-sensitive salmonids.

 The **Liquefied Natural Gas** proposal for southern Oregon would site an enormous import facility in Coos Bay, with a pipeline that would cross southern Oregon water bodies 379 times, employing dangerous drilling techniques to cross under the Coos, Umpqua, Rogue and Klamath rivers while using explosives to blast through smaller waterways. The project would impact 29 species listed on the Endangered Species Act, including Coho salmon.



Of course, KS Wild's work is about much more than water, but when 70% of the human body is made up of this resource, it is important to remember just how crucial aquatic health is to life on earth. And, it is also important to remember that this health can only be assured by protecting the entire ecosystem that contributes to our aquatic wealth – the forests and mountain springs where our waters come from, the living soils that create healthy riparian zones and stable streambanks, and the rich river bottom lands that are increasingly under threat from unchecked development.

## LOOKING FORWARD TO 2011

While the Klamath-Siskiyou is currently one of North America's most important sources of carbon sequestration and provides crucial biodiversity and wildlife habitat, the reality is that it will remain so only with the vigilance of its stewards. **We need your support to tackle the following challenges in the coming year:**



### ROADS:

A recent scientific analysis of erosion rates indicates that soil erosion (and subsequent sedimentation of our waterways) poses an even bigger threat to regional ecosystem health than previously acknowledged. Past extensive logging and mining has left a bloated, degraded road network that is the primary conveyer of sediment. Federal travel planning processes designed to address this threat are drawing to a close, and KS Wild will likely find itself in the courts in 2011, pushing the Forest Service to take real responsibility for making its road system manageable and sustainable.

### MINING:

While the price of all finite resources is on the rise in our increasingly stressed world, gold in particular has reached new heights. Prospectors and miners have increased in number dramatically and are poised to cause great damage to aquatic ecosystems that are struggling to recover from past abuses. KS Wild's Conservation and Rogue Riverkeeper programs are working hand in hand to track and challenge new and proposed mines and advocate for systemic reform of the antiquated laws that allow these destructive activities to proliferate unchecked.

### FOSSIL FUEL DEVELOPMENT:

Californians and residents of the Columbia River basin have turned back efforts to site a Liquefied Natural Gas (LNG) facility on their shores. Industry efforts are now focused on the Coos Bay LNG import terminal and 235-mile-long pipeline across southern Oregon. KS Wild and Rogue Riverkeeper are coordinating the legal battle against this proposal and working closely with community organizers to help landowners and public lands advocates fight back against this dangerous and ill-advised plan.

### FOREST RESTORATION ADVOCACY AND OVERSIGHT:

KS Wild has worked for years to fight against industrial logging on our national forests. In the coming year, we will be in the spotlight working on high-profile restoration projects, such as the Department of Interior's Middle Applegate Pilot project, and dozens of other forest thinning and watershed projects to ensure that science-based forest restoration activities preserve older forests, water quality and wildlife habitat.

No one said saving the world would be easy, but it's a job we must do. **Please give generously so that KS Wild can continue to stand tall for the natural treasures that you care about.** If you would like to get more involved as a volunteer, please contact me at 541-488-5789 or [stephanie@kswild.org](mailto:stephanie@kswild.org) to discuss ways to plug in.

For the Wild,

A handwritten signature in cursive script that reads "Stephanie Tidwell".

Stephanie Tidwell, Executive Director

**P.S. If you donate \$50 or more, you will receive a Rogue Riverkeeper stainless steel water bottle.** The Clean Water Act in and of itself does not ensure clean water. Rather, it depends on informed and involved communities to organize, speak up and take action for clean water. **KS Wild's Rogue Riverkeeper program is providing important agency oversight for our precious water resources in this perilous time of a changing climate.** Whether on the water, in a courtroom, or at a town meeting, Rogue Riverkeeper defends our public waters from polluters and holds government agencies accountable. **Please donate today and demonstrate your support for local conservation while keeping plastic bottles out of the landfill!**



## SUCKER CREEK: AN EXAMPLE OF LANDS AND WATERS UNDER THREAT

Sucker Creek is a case study in how terrestrial and aquatic extraction activities can combine to cause great damage to crucial ecosystems. This critical Coho stream has suffered from more than a century of abuse. Following the initial mining boom that scoured out most of the watershed, the Forest Service and BLM facilitated logging, mining and road building for decades, leaving a patchwork of clearcuts and residual old-growth forest stands that were unable to sustain salmon. After Coho were listed under the Endangered Species Act, millions of dollars went toward restoring this stream, and it is once again the biggest Coho producer in the Illinois Valley.



Unfortunately, the skyrocketing price of gold has brought miners back to Sucker Creek to claim and extract what little gold was left behind, and the archaic 1872 General Mining Act paves the way for them to do great destruction on the taxpayers' dime. One claim was illegally logged and mined last year, leading to criminal convictions and fines. On others, Riparian Reserves are being clearcut and placer mined, and tractors plow through the creek bed with virtually no permitting or oversight. Cumulatively, the impacts are severe, so KS Wild and Rogue Riverkeeper are working with our allies to force adequate protections for these vital wetlands and salmon habitat before they once again collapse.